

THE  
PROMONT

A decorative blue arc that spans the width of the main title, positioned above the subtitle.

TERRACED HILLSIDE RESIDENCES

Actual image shot as on 9th April 2017



HIGH ABOVE THE CROWDED CITY...  
CLOSE TO EVERYTHING YOU WISH FOR.

Like the palaces of the kings of yesteryears, The Promont is built on the majestic Banashankari hills of South Bangalore – truly a venue to look up to. The Promont is one of Bangalore's most coveted 'Hill Residences'. Comprising of 312 uniquely crafted apartments and penthouses across 4 towers. A self contained settlement in itself, which amalgamates modern day luxuries and amenities in the midst of 14 acres of lush natural scapes, The Promont offers a lifestyle fit for a king with easy access to the city and key locations. Here, you are never too far away from where you want to be.

STOP EXISTING.  
EXPERIENCE PURE LIVING,  
AT THE PROMONT.

The Promont is a lifestyle choice few will ignore. Uniquely crafted apartments and penthouses inspired by western residences ensure that you disconnect from the daily grind and reconnect with the people who make living life, worth it.

ALL APARTMENTS COME OUTFITTED WITH:

\*HOME AUTOMATION WILL BE PROVIDED AS STATED BELOW:

DRAWING / DINING SPACE: CURTAIN CONTROLS (1 WINDOW), AIR CONDITIONING CONTROL (2 ACS), LIGHTS AND FANS CONTROL (4 POINTS FOR LIGHT / FAN), BURGLAR ALARM, PANIC SWITCH AND GAS LEAK SENSOR IN KITCHEN

MASTER BEDROOM: CURTAIN CONTROLS (2 WINDOWS), AIR CONDITIONING CONTROL (1 AC), GEYSER CONTROL (1 GEYSER), LIGHTS AND FANS CONTROL (2 POINTS FOR LIGHT / FAN)

A DOUBLE HEIGHT BALCONY WITH A 180 DEGREE PANORAMIC VIEW OF THE CITY | 3-TIER SECURITY SYSTEM | \*LARGE LIVING ROOMS INSPIRED BY THE DESIGNS OF RESIDENCES IN EUROPE AND USA | MODULAR KITCHEN WITH PIPED GAS SYSTEM | WHIRLTUB IN 4 BHK MASTER BEDROOM & BATHTUB IN 3 BHK MASTER BEDROOM | FIXTURES AND FITTINGS FROM DURAVIT AND HANSGROHE OR EQUIVALENT BRAND.

TAKE A BREATH OF FRESH AIR, SEE LIFE FROM A DIFFERENT PERSPECTIVE, BE INSPIRED BY THE LUSH GREEN EXPANSE OF NATURE, SPEND MORE TIME WITH LOVED ONES... EXPERIENCE PURE LIVING AT THE PROMONT.

Actual image shot on 9th April 2017.



\*Home automation provided only in master bedroom and drawing/dining space.

\*Refer the floor plans.

Please contact our project sales team for further details

## WINNING AT PURE LIVING.

The Promont is dedicated to making life for you and your loved ones simpler and secure. The superlative design and architecture is more than just a pretty façade. It has been built with utmost attention to detail. Behind its awe-inspiring beauty, it hides the smaller, simple aspects that enable you to enjoy a stress-free life. All the pre-requisites for living comfortably have already been entrenched within every aspect of the property. But we've gone a step further to give you a wholesome experience of pure living.

### AWARDS AND ACCOLADES

- IGBC (Indian Green Building Council) Pre-Certified Gold rating building and VRV (Variable Refrigerant Volume) based HVAC (Heating Ventilation and Air Conditioning) system.
- Winner of 3 Asia Pacific Property Awards for Design.  
(Highly Commended Award for Design Apartment for India)  
(5 Star award for Leisure Architecture for India)  
(5 Star award for Leisure Development for India)



Indian Green Building Council



AIR CONDITIONED GROUND FLOOR LOBBY RETROFITTED WITH ITALIAN MARBLE FLOORING  
EARTHQUAKE RESISTANT STRUCTURE | 100% POWER BACKUP | TWO HIGH SPEED ELEVATORS IN EACH OF THE 4 TOWERS



## FLOORING

Volakas marble in living, dining and master bedroom areas.  
Premium quality vitrified tiles in kitchens and toilets.

Actual image shot as on 9th April 2017



## BATH & KITCHEN FITTINGS.

Modular kitchen with piped gas system.

Whirltub in 4 BHK master bedroom & Bathtub in 3 BHK master bedroom.

Luxury bath fixtures and fittings by Duravit and Hansgrohe or equivalent brand.



## DOORS, WINDOWS & RAILINGS

Natural teak veneer finish (polished) on both sides of the main entrance door.

## ELECTRICALS

Electric copper wiring throughout in concealed conduits. Modular switches.

Actual image shot as on 9th April 2017



Actual image shot as on 9th April 2017  
The tiles, fixtures & fittings are susceptible to variations in shade.



## HOME AUTOMATION AND SECURITY.

**\*Home automation will be provided as stated below**

**Drawing / Dining space:** Curtain Controls (1 window), Air Conditioning Control (2 ACs), Lights and fans control (4 points for Light / Fan), Burglar alarm, Panic Switch and Gas Leak Sensor in Kitchen.

**Master Bedroom:** Curtain Controls (2 windows), Air Conditioning Control (1 AC), Geyser Control (1 Geyser), Lights and fans control (2 points for Light / Fan).

3- tier security system.

\*Home automation provided only in master bedroom and drawing/dining space.  
Please contact project sales team for further details.

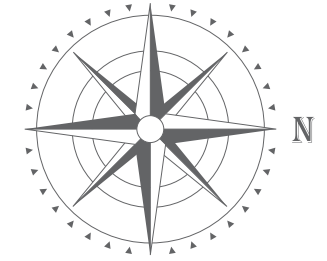
FAR AWAY FROM  
THE CITY CONGESTION.  
YET AT THE CENTRE OF  
EVERYTHING YOU NEED.

	DG Hospital	: 3.5 km*
	Metro Station	: 4 km*
	Kumarans School	: 5.7 km*
	Gopalan Mall	: 6 km*
	BGS Global Hospital	: 8 km*
	City Railway Station	: 9 km*
	City Bus Station (Majestic)	: 9 km*
	MG Road	: 13 km*



Source - Google Map  
\*Distance and timelines (shortest) are tentative and approximate subject to road and infrastructure facilities provided by the appropriate authorities.

# MASTER PLAN



## LEGEND\*

1. Main Entry and Exit
2. Basement Entry and Exit
3. Podium Level Entry and Exit
4. Driveway
5. Apartment Drop Off Point
6. Clubhouse Entry
7. Water Bodies
8. Children's Play Area
9. Amphitheatre
10. Party Lawn
11. Pool Deck
12. Swimming Pool With Infinity Edge
13. Kid's Pool
14. Walkway
15. Rubberised Jogging Track
16. OC Received for Towers Elana & Almora on 23/08/2016
17. OC received for Towers Altura & Altezza on 23/08/2017

\*Artistic Image. Green areas for representative purposes.\*

HIGH ABOVE THE CROWDED CITY,  
CLOSE TO EVERYTHING YOU WISH FOR.





Actual image shot as on 9th April 2017



RELAX.  
REFRESH.  
REJOICE.

The Promont offers multiple avenues to get away from the daily monotony. You can find everything you need to experience life at its finest. Experience the joy of catching the latest box office hits at the mini theatre or sample delicacies from around the world without having to go too far. The three level clubhouse hosts all this and a number of other amenities to keep you relaxed, refreshed and entertained.

ENJOY AMAZING AMENITIES INCLUDING A THREE LEVEL CLUBHOUSE

BASEMENT : SQUASH COURTS

GROUND FLOOR : OUTDOOR INFINITY EDGE POOL | TEMPERATURE CONTROLLED INDOOR POOL | INDOOR JACUZZI | KID'S POOL

FIRST FLOOR : GOLF SIMULATION ZONE | GYM | CARD ROOM | POOL TABLE | YOGA ROOM | LIBRARY | TABLE TENNIS

MINI THEATRE | CARROM | CHESS

SECOND FLOOR : BANQUETS | RESTAURANT\* | BUSINESS CENTER

ACROSS THE PROPERTY YOU CAN MAKE USE OF : JOGGING TRACK | OUTDOOR CHILDREN'S PLAY AREA

CONVENIENCE STORE\* | BASKET BALL COURT

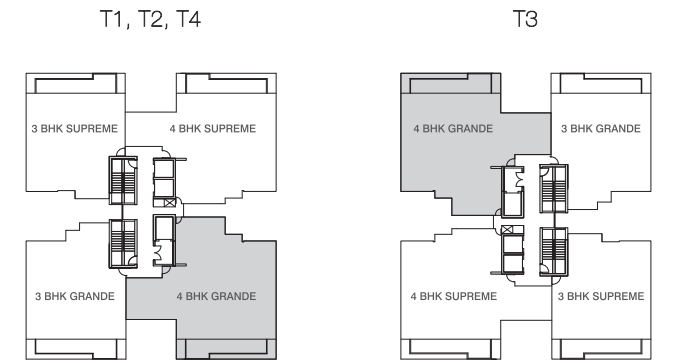




Disclaimer: This is a typical unit plan, subject to minor variations. The room measurements are mentioned in meters.

- T1: ALтура
- T2: ALTEZZA
- T3: ELANA
- T4: ALMORA

Disclaimer: Measurement are approximate and indicative subject to minor variations & final approval from authority.



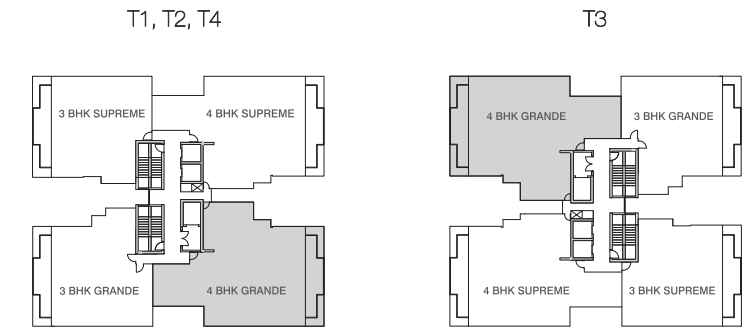
4 BHK GRANDE	: TYPE A1 (Available on all odd numbered floors)
Carpet area	: 182.995 sqm / 1969.742 sft.
Balcony area	: 28.594 sqm / 307.783 sft.
Apt. wall area	: 15.208 sqm / 163.697 sft.
Total	: 226.797 sqm / 2441.222 sft.

Areas measurements are approximate and subject to minor variations.



T1: ALтура  
T2: ALTEZZA  
T3: ELANA  
T4: ALMORA

Disclaimer : Measurement are approximate and indicative subject to minor variations & final approval from authority.



4 BHK GRANDE	: TYPE A2 (Available on all even numbered floors)
Carpet area	: 182.995 sqm / 1969.742 sft.
Balcony area	: 28.594 sqm / 307.783 sft.
Apt. wall area	: 15.208 sqm / 163.697 sft.
Total	: 226.797 sqm / 2441.222 sft.

Areas measurements are approximate and subject to minor variations.

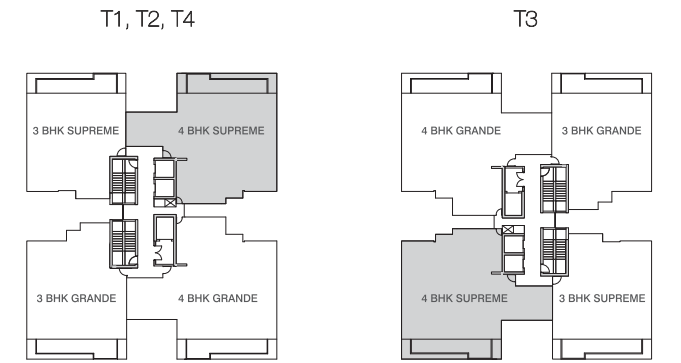
Disclaimer: This is a typical unit plan, subject to minor variations. The room measurements are mentioned in meters.



Disclaimer: This is a typical unit plan, subject to minor variations. The room measurements are mentioned in meters.

- T1: ALTURA
- T2: ALTEZZA
- T3: ELANA
- T4: ALMORA

Disclaimer: Measurement are approximate and indicative subject to minor variations & final approval from authority.



4 BHK SUPREME

: TYPE A1 (Available on all odd numbered floors)

Carpet area

: 171.301 sqm / 1843.869 sft.

Balcony area

: 28.594 sqm / 307.783 sft.

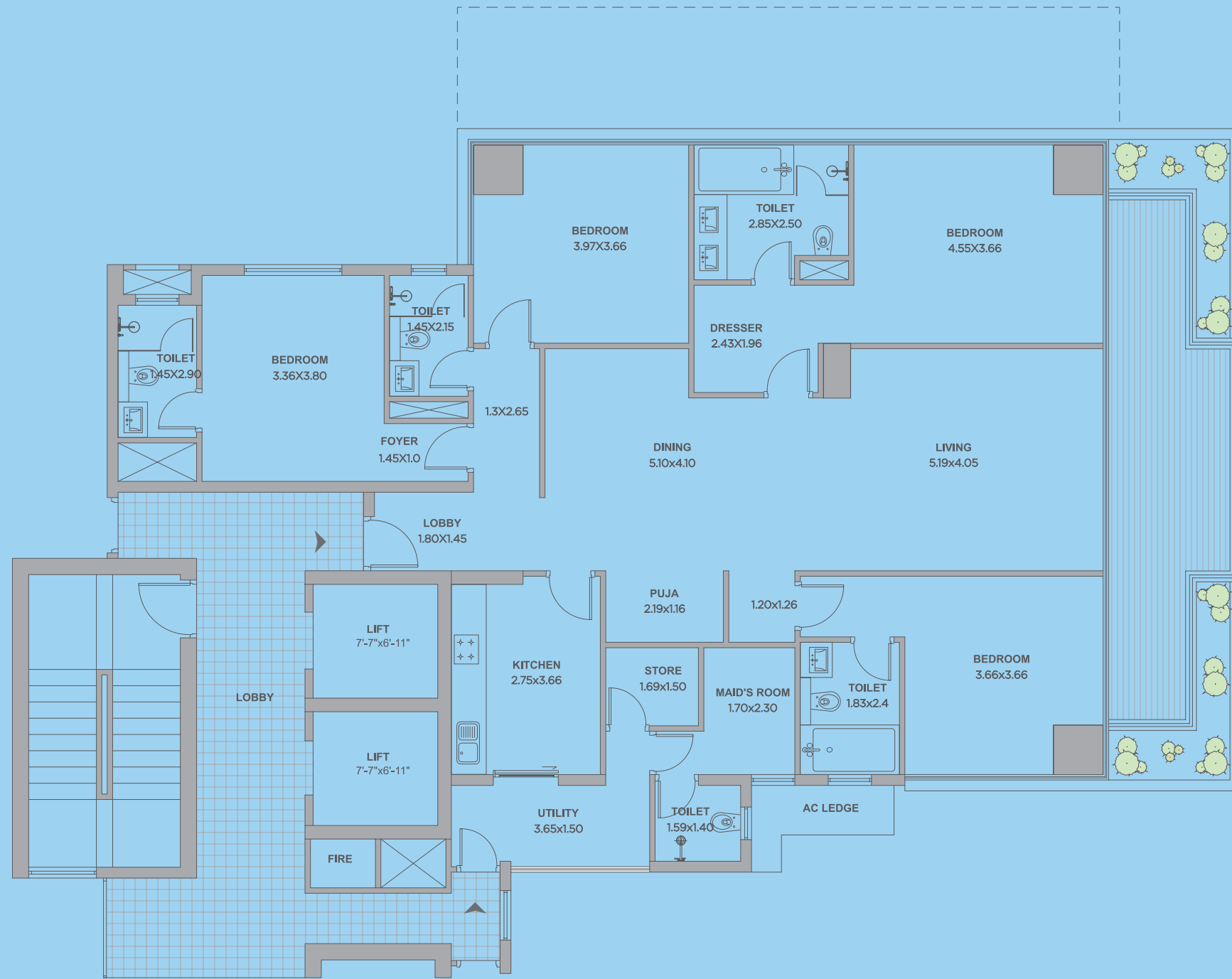
Apt. wall area

: 14.441 sqm / 155.447 sft.

Total

: 214.336 sqm / 2307.099 sft.

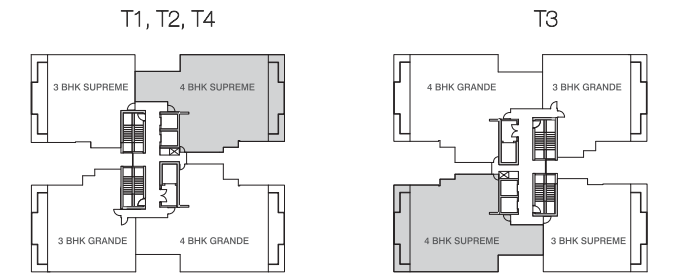
Areas measurements are approximate and subject to minor variations.



Disclaimer: This is a typical unit plan, subject to minor variations. The room measurements are mentioned in meters.

T1: ALTURA  
T2: ALTEZZA  
T3: ELANA  
T4: ALMORA

Disclaimer: Measurements are approximate and indicative subject to minor variations & final approval from authority.



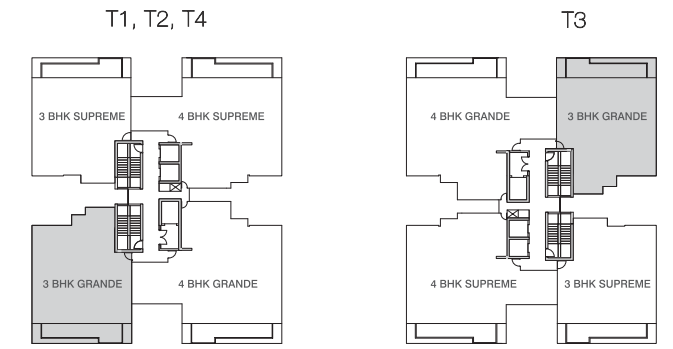
4 BHK SUPREME	: TYPE A2 (Available on all even numbered floors)
Carpet area	: 171.301 sqm / 1843.869 sft.
Balcony area	: 28.594 sqm / 307.783 sft.
Apt. wall area	: 14.441 sqm / 155.447 sft.
Total	: 214.336 sqm / 2307.099 sft.

Areas measurements are approximate and subject to minor variations.



T1: ALTURA  
T2: ALTEZZA  
T3: ELANA  
T4: ALMORA

Disclaimer : Measurement are approximate and indicative subject to minor variations & final approval from authority.



3 BHK GRANDE

: TYPE A1 (Available on all odd numbered floors)

Carpet area

: 134.434 sqm / 1447.036 sft.

Balcony area

: 28.594 sqm / 307.783 sft.

Apt. wall area

: 11.365 sqm / 122.331 sft.

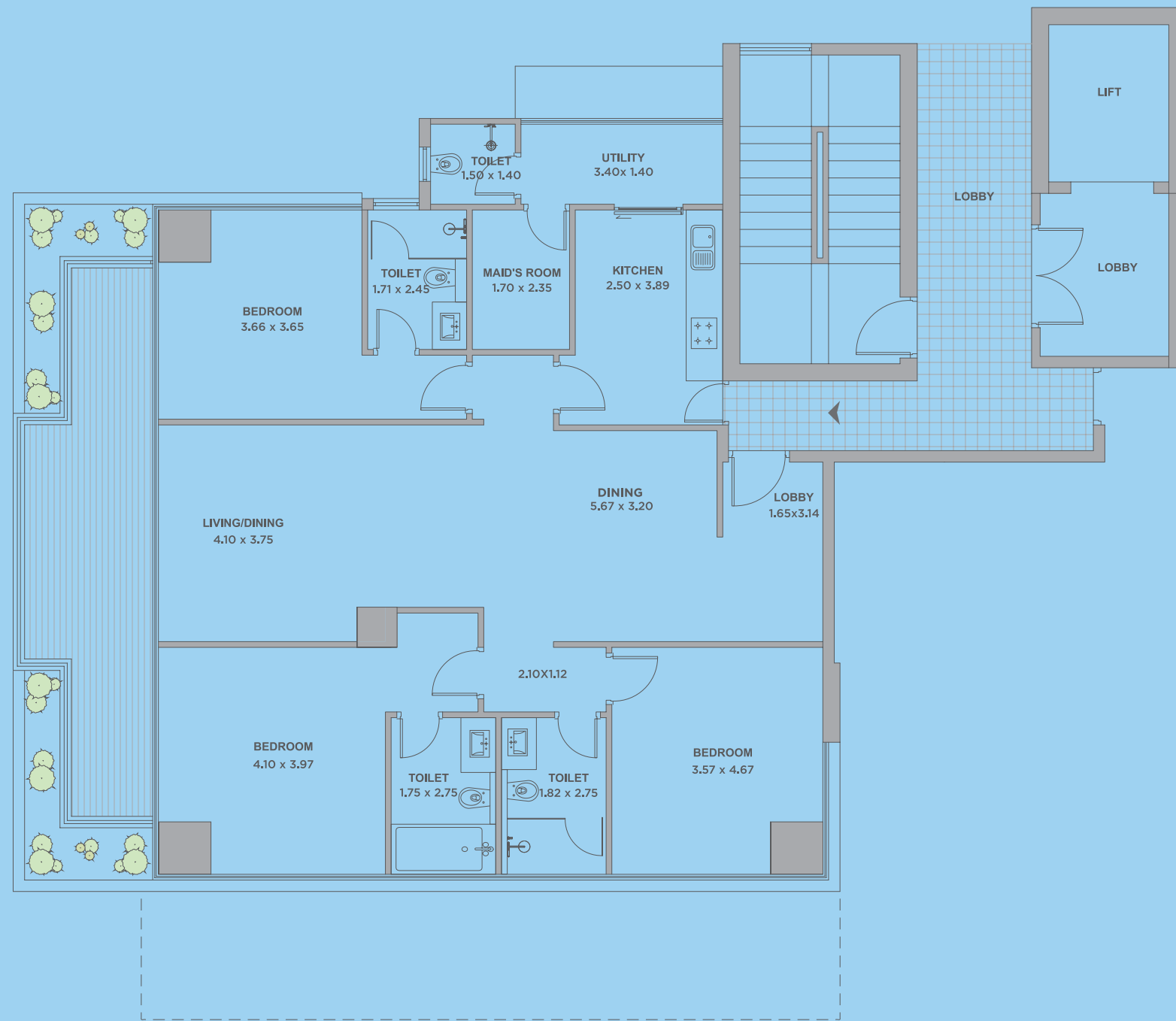
Total

: 174.393 sqm / 1877.150 sft.

Disclaimer: This is a typical unit plan, subject to minor variations. The room measurements are mentioned in meters.

Areas measurements are approximate and subject to minor variations.

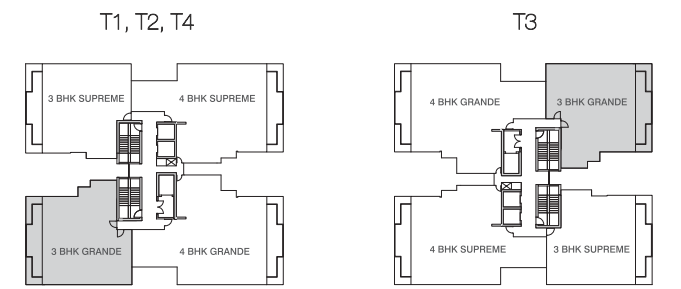




Disclaimer: This is a typical unit plan, subject to minor variations. The room measurements are mentioned in meters.

- T1: ALTURA
- T2: ALTEZZA
- T3: ELANA
- T4: ALMORA

Disclaimer: Measurements are approximate and indicative subject to minor variations & final approval from authority.



3 BHK GRANDE	: TYPE A2 (Available on all even numbered floors)
Carpet area	: 134.434 sqm / 1447.036 sft.
Balcony area	: 28.594 sqm / 307.783 sft.
Apt. wall area	: 11.365 sqm / 122.331 sft.
Total	: 174.393 sqm / 1877.150 sft.

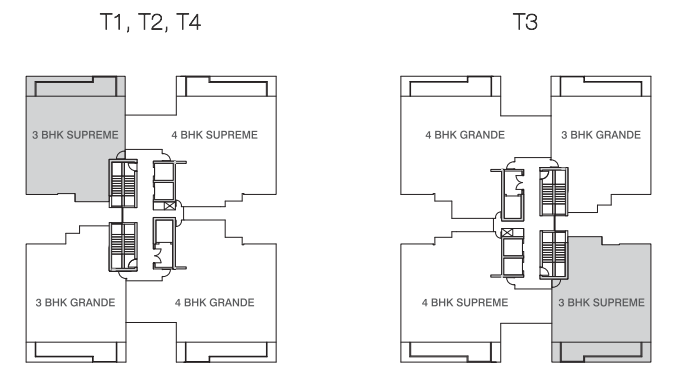
Areas measurements are approximate and subject to minor variations.



Disclaimer: This is a typical unit plan, subject to minor variations. The room measurements are mentioned in meters.

- T1: ALтура
- T2: ALTEZZA
- T3: ELANA
- T4: ALMORA

Disclaimer: Measurements are approximate and indicative subject to minor variations & final approval from authority.



3 BHK SUPREME

: TYPE A1 (Available on all odd numbered floors)

Carpet area

: 128.299 sqm / 1380.999 sft

Balcony area

: 28.594 sqm / 307.783 sft.

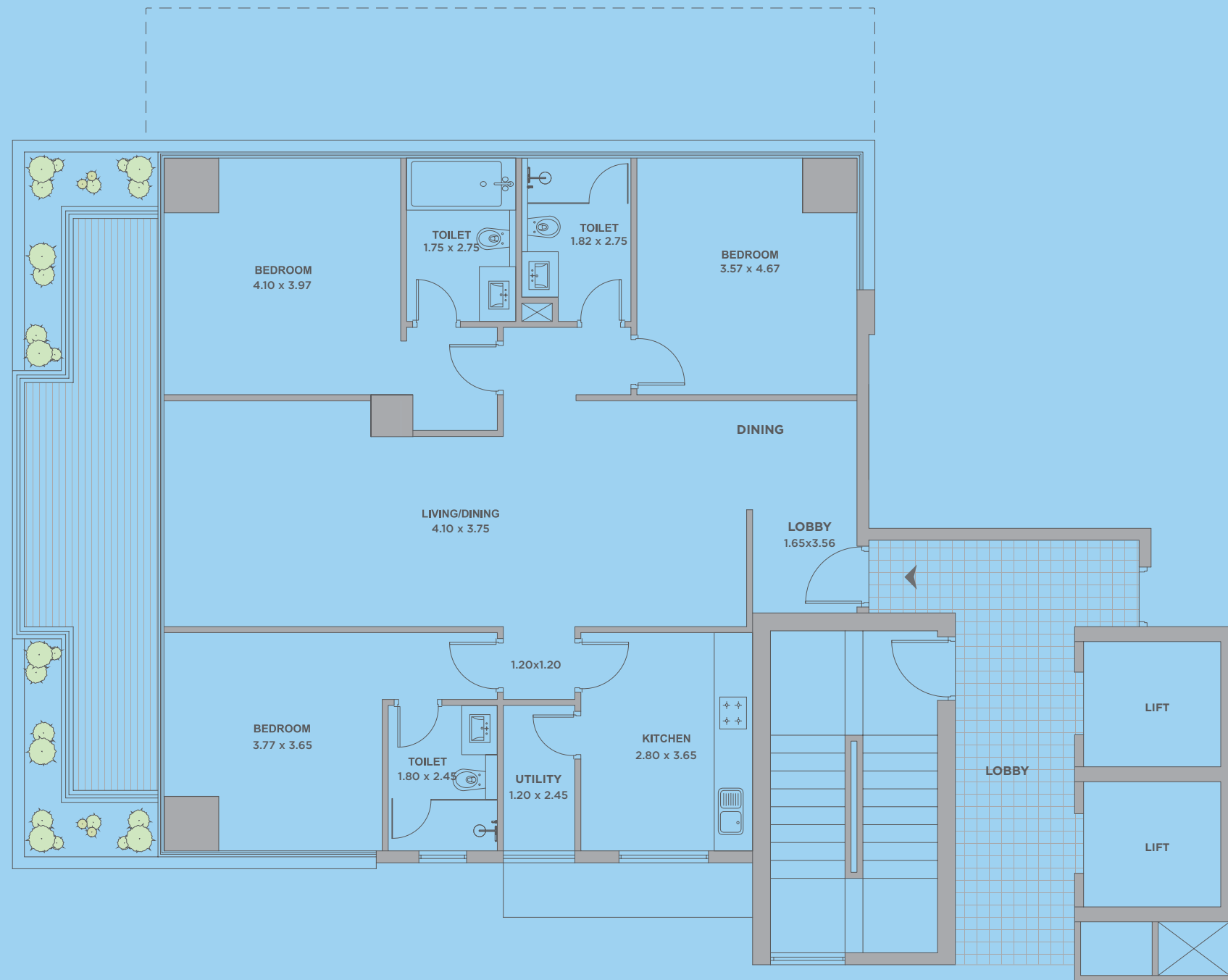
Apt. wall area

: 12.315 sqm / 132.557 sft.

Total

: 169.208 sqm / 1820.339 sft.

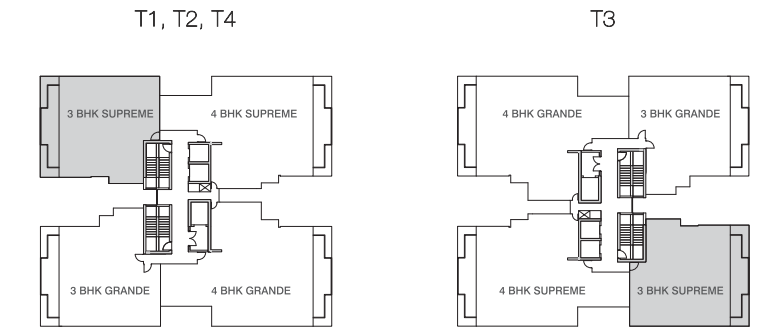
Areas measurements are approximate and subject to minor variations.



Disclaimer: This is a typical unit plan, subject to minor variations. The room measurements are mentioned in meters.

T1: ALтура  
 T2: ALTEZZA  
 T3: ELANA  
 T4: ALMORA

Disclaimer: Measurements are approximate and indicative subject to minor variations & final approval from authority.



3 BHK SUPREME	: TYPE A2 (Available on all even numbered floors)
Carpet area	: 128.299 sqm / 1380.999 sft.
Balcony area	: 28.594 sqm / 307.783 sft.
Apt. wall area	: 12.315 sqm / 132.557 sft.
Total	: 169.208 sqm / 1820.339 sft.

Areas measurements are approximate and subject to minor variations.

## ABOUT TATA HOUSING.

Tata Housing has evolved into one of the fastest growing real estate development companies in India. With the primary business being development of properties in residential, commercial and retail sectors, the company's operations span across various aspects of real estate development. The company's mission as a real estate development company is, "to delight customers by providing quality life spaces through continuous innovations."

The company is recognized for its quality construction, ethical and transparent business practices, and high standards of maintenance of properties. The company develops every property only after concentrated and focused market research to determine consumer needs and then the project is designed and implemented according to consumer preferences.

Tata Housing today has partnered with internationally acclaimed architects and design consultants. Tata Housing's projects are built to high quality specifications instantly making them landmarks. Quality has become synonymous with TATA Housing.

## OUR DELIVERED PROJECTS



Aquila Heights  
Jalahalli, East. Bengaluru 560 013.  
Ph I - Polaris OC Received On 4-05-2011  
Ph I - Vega OC Received On 23-06-2011  
Ph II - Atria 2-10-2012



Eden Court  
Rajarhat, Kolkata 700 156.  
Ph I - T-A,B,C OC Received On 25-06-2012  
Ph II - T-D,E OC Received On 19-09-2013  
Ph III - Centrus Mall OC Received On 28-05-2014



Raisina Residency  
Sector 59, Gurgaon 122 002.  
Part 1 OC Received On 29-03-2012  
Part 2 OC Received On 12-12-2013  
Part 3 OC Received On 01-07-2014



Privé  
Old Khandala Road, Lonavala 410 401.  
Part 1 OC Received On 29-03-2013  
Part 2 OC Received On 01-08-2014  
Part 3 OC Received On 22-04-2015  
Club House OC Received On 22-04-2015



Amantra  
Kalyan-Bhiwandi Jn.  
Ph I OC Received on 31-03-2016.

THE  
**PROMONT**

TERRACED HILLSIDE RESIDENCES

For further information/terms & conditions, please contact our Sales Team at

**Call: 1800 266 9639 | Email: [mktginfo@tatahousing.com](mailto:mktginfo@tatahousing.com) | [www.tatahousing.in/thepromont](http://www.tatahousing.in/thepromont)**

---

**Site Address:** Promont Hill, SY No. 168, 3rd Main Road, Ittamadu, BSK 3rd Stage, Hosakerehalli, Bengaluru 560085, India.